



Rubbish and recycling guide

www.mdc.govt.nz



Rubbish and recycling guide

The Manawātū District Council has a plan for reducing waste to help make the Manawātū an even better place to live, work and play. Waste services are one of the many services you get for your rates.

The Waste Management Minimisation Plan (WMMP) sets out how, during the next few years, the Manawātū District Council will:

- deliver efficient and cost effective solid waste services to customers while safeguarding public health, taking into account cultural issues and minimising adverse effects on the environment
- promote waste reduction towards zero waste through education, development and implementation of recycling, reuse and recovery methods.

It's time to see our waste for what it can be – a valuable resource

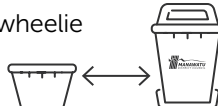
The Manawātū community are already great recyclers, sending more than 2,700 tonnes of material to be turned into new products every year. But we can still do more. The average resident sends about 900kg of rubbish to landfill every year. Of this 50% could have been avoided or put to better use.

The tips in this guide will help you reduce the amount of waste you send to landfill. It will help with what you can recycle and when. There are many services we provide for effective waste management in the community. It's actually much easier than you might have thought!



Recycling

- If you are a Feilding resident, your recycling is collected every fortnight.
- You can recycle containers with any of the recycling symbols 1, 2 & 5 from the kitchen, bathroom and laundry including bottles, tins and cans, paper and cardboard as well as milk and juice cartons in your wheelie bin. Please ensure your wheelie bin is loosely filled to allow for ease of emptying.
- Please don't put plastic bags in your Manawātū District Council recycling bin as they get caught and jam in the recycling sorting machines.
- You can recycle glass bottles and jars in your black crate. Please do not overfill your crate though as this makes it difficult for our contractors to lift and sort kerbside.
- Please allow a half-meter gap between your wheelie bin and any other object. The arm of the collection truck needs this room to safely open and pick the bin up.
- Recycling is collected fortnightly in Feilding from your wheelie bin and black crate .
- The main villages in the district have 24/7 access to community located recycling facilities.



Please remember:

- To rinse and squash any containers, food tins or cans.
- To take the lids off any bottles and containers.
- Your recycling needs to be kerbside by 7:30am on your collection day.
- If you have too much recycling for your bin, you can visit the Feilding Transfer Station at 247A Kawakawa Road.

When is your recycling collection day?

Search <http://www.mdc.govt.nz/> for your collection day.

There is also a handy sticker on the side of your wheelie bin which will tell you what alternate week your recycling is being collected.

✓ YES PLEASE



Paper and cardboard (free of food scraps), boxes (flattened), newspapers, letters & envelopes



Plastic 1, 2 & 5 containers and bottles with lids removed



Glass bottles and jars (in your black recycling crate)



Egg trays



Aluminum and steel tins and cans, metal jar

✗ NO THANKS



Food, garden waste, soil and rocks



Hazardous waste, paints, chemical and medical waste



Plastic bags (full or empty)



Polystyrene including meat trays or toys and furniture



Pyrex, ceramics, lightbulbs, mirrors and window glass



Electronics and metal appliances



Nappies, tissues, sanitary products or pet waste



Clothing, textiles and shoes



Plastics 3, 4, 6, 7 and soft plastics (i.e. gladwrap)



Aluminium foil

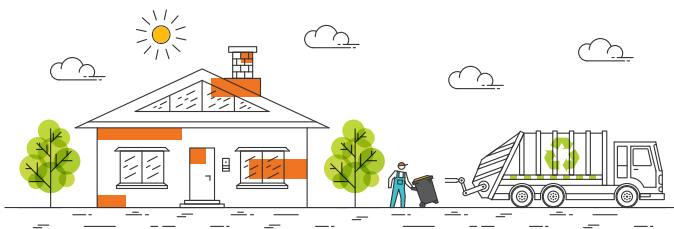
Rubbish

If you are a Feilding resident, you have access to a weekly kerbside rubbish collection service.

Your rubbish will need to be in a branded Manawātū District Council blue rubbish bag for collection.

The Council blue rubbish bags are for sale at local supermarkets in Feilding and Palmerston North, the Council offices at 135 Manchester Street in Feilding, our public library on Bowen Street as well as local convenience stores located throughout the district.





On your collection day

Putting your rubbish and recycling out

- Leave your bin, crate and rubbish bag as close as you can to the kerbside, clear of the footpath and clear of other bins.
- Place your bin, crate and rubbish bag away from signs, lamp posts, trees or parked cars.
- Make sure your bin is loosely filled and not overfull so that the lid can close.
- Please allow a half-metre gap between your wheelie bin and any other object. The arm of the collection truck needs this room to safely open and pick the bin up.
- Wrap any broken glass or sharp objects before putting them in your rubbish bag.
- Place your bin, crate and rubbish bag out before 7:30am on your collection day.
- Remember, if your usual collection day falls on a Good Friday, Christmas Day or New Year's Day, this may be moved to the following Saturday. Collections will continue as normal for all other public holidays.

For information about loss of bin, damage to bin or collection date changes, please visit www.mdc.govt.nz or call 06 323 0000.

**Remember if you don't put your
rubbish or recycling out correctly,
it may not be collected.**

Village rubbish and recycling

Rubbish

For those residents living in the district's villages outside of Feilding, a rubbish collection service is provided along a specific route every week on a certain day:

Monday	Thursday	Friday
<ul style="list-style-type: none">• Colyton• Glen Oroua• Halcombe• Himatangi Beach• Hiwinui• Pohangina• Rangiotu• Tangimoana	<ul style="list-style-type: none">• Apiti• Cheltenham• Kauwhata• Kimbolton• Rangiwahia• Waituna West	<ul style="list-style-type: none">• Rongotea• Sanson

Not all residents have access to a kerbside rubbish collection service. Please check our rural collection route map on our website to see if your property is included.

Residents living on properties outside the collection route can drop their rubbish in the council's branded blue rubbish bags at one of the designated collection points on their collection day.

Visit www.mdc.govt.nz to view the collection point locations.



Please ensure your rubbish bags are out before 7:30am.

Recycling

We have built a network of community-run mobile recycling facilities for our villages where you can take items suitable for recycling whenever it suits you.

We have eight mobile recycling centres located throughout the district:

Apiti - Watsons Road

Halcombe - 46 Willoughby Street

Himatangi Beach - Koputara Road

Kimbolton - London Street

Pohangina Valley - Finnis Road

Rongotea - Wear Street

Sanson - 42 Dundas Road

Tangimoana - Tangimoana Beach Road



Plastic containers with any of the recycling symbols 1, 2 & 5. Please ensure these are rinsed with the tops removed



PET



HDPE



PP



Newspapers, magazines, cardboard



Aluminum and steel cans, rinsed tins



Glass bottles and jars



Plastic bags, household rubbish



Polystyrene, window glass, mirror or Pyrex

Bulk rubbish collections

A number of bulk rubbish collections take place around the district. To see when this is happening and where, visit our website www.mdc.govt.nz.

Everything out by 7:30am

Waste transfer stations

There is one waste transfer station in the Manawatū. The transfer station is a place where you can drop off items such as garden waste, larger household waste and scrap metal and hazardous waste.

The Feilding Transfer Station is located at:

125A Kawakawa Road, Feilding.

Opening hours:

Monday to Friday 8am - 4pm

Saturday & Sunday 9am - 5pm

LITTER & ILLEGAL DUMPING

Litter

Littering makes our streets untidy and can pollute our waterways and beaches. We can all do our bit to keep our communities litter free by putting our rubbish bags and recycling bins and crates out correctly and putting litter in the bins provided.

Illegal dumping

The council investigates littering and illegal dumping and will prosecute serious offenders. The penalties for illegal dumping can be significant. If you see someone littering or dumping rubbish please contact the Manawatū District Council immediately on 06 323 0000.

Agricultural waste

Agricultural waste or hazardous waste must not be put out with your household rubbish. Burying or burning your agricultural waste can negatively impact your property, health and the wider environment.

How to correctly dispose of your plastic waste and chemical products:

Plasback is a private company accredited by the Ministry for the Environment. They can collect a variety of waste plastics such as bale wrap, shrink wrap, feed bags, twine and high density polyethylene drums.

Recycling with Plasback is easy.

1. Buy Plasback liners online at <https://plasback.co.nz/shop-online>
2. Bag your waste plastic as it accumulates
3. Call 0508 338 240 to arrange for collection.

A number of different options are available for the safe disposal of agricultural chemicals.

- 3R has annual council subsidised collections of various banned agrichemicals such as DDT and Dieldrin, Lindane, Chlordane (POPs). Visit www.3r.nz/chemcollect
- Agrecovery is a not-for-profit charitable trust providing New Zealand farmers and growers with nationwide programmes for container recycling, drum recovery, and the collection of unwanted or expired chemicals. Visit www.agrecovery.co.nz for more information.

Agrecovery also provides free drop-off for participating brands of used agrichemical containers at sites located throughout New Zealand. Feilding's collection site is at PGG Wrightsons, 18 Manchester Street, Feilding. Please ensure your containers are rinsed with the lids off.



Manawatū District Council
135 Manchester Street
Private Bag 10001
Feilding 4743

P 06 323 0000
F 06 323 0822
E public@mdc.govt.nz
www.mdc.govt.nz